

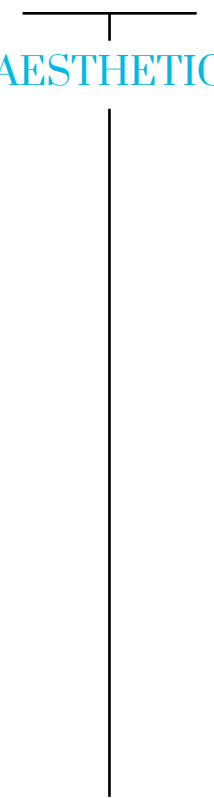
Deleo

CREATOR IN
AESTHETIC MEDICINE

NON INVASIVE

AESTHETIC

EXPERTS



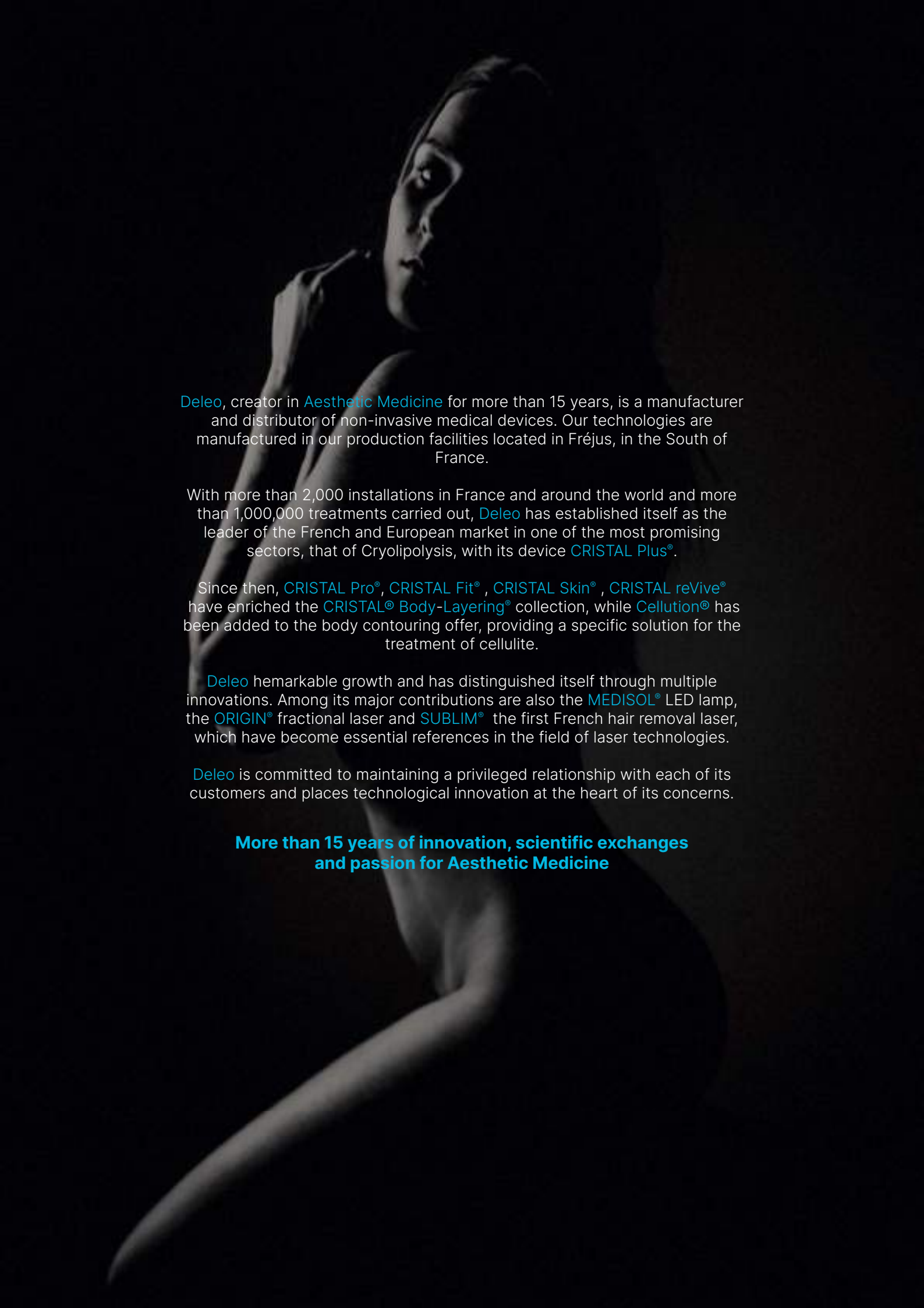
LET'S SHAPE
THE FUTURE

"For more than 15 years, our brand has been present in the four corners of the world and providing solid, secure solutions entirely designed and manufactured in France. A major player in medical aesthetics, our strong team spirit and our desire for excellence are the keys to our development. It is thanks to your expertise and your valuable feedback that we are building the future of aesthetic medicine together."

Frederic SAMSON
DELEO CEO FOUNDER



*The Deleo Team
Head Office since 2020*



Deleo, creator in **Aesthetic Medicine** for more than 15 years, is a manufacturer and distributor of non-invasive medical devices. Our technologies are manufactured in our production facilities located in Fréjus, in the South of France.

With more than 2,000 installations in France and around the world and more than 1,000,000 treatments carried out, **Deleo** has established itself as the leader of the French and European market in one of the most promising sectors, that of Cryolipolysis, with its device **CRISTAL Plus**®.

Since then, **CRISTAL Pro**®, **CRISTAL Fit**®, **CRISTAL Skin**®, **CRISTAL reVive**® have enriched the **CRISTAL**® **Body-Layering**® collection, while **Cellution**® has been added to the body contouring offer, providing a specific solution for the treatment of cellulite.

Deleo remarkable growth and has distinguished itself through multiple innovations. Among its major contributions are also the **MEDISOL**® LED lamp, the **ORIGIN**® fractional laser and **SUBLIM**® the first French hair removal laser, which have become essential references in the field of laser technologies.

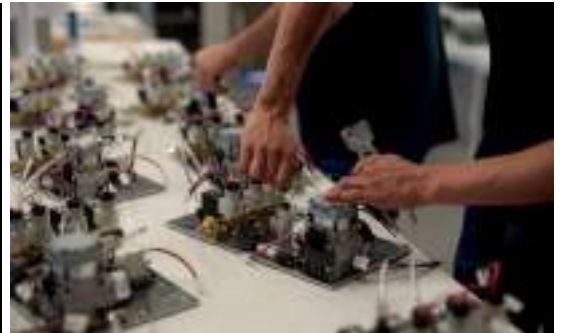
Deleo is committed to maintaining a privileged relationship with each of its customers and places technological innovation at the heart of its concerns.

**More than 15 years of innovation, scientific exchanges
and passion for Aesthetic Medicine**

RESEARCH
& DEVELOPMENT
DEPARTMENT



PRODUCTION
UNIT



QUALITY
& REGULATION
DEPARTMENT



2010

Creation of **Deleo**

2012

Launch & certification of **MEDELISOL®**

2014

Launch & certification of **CRISTAL Plus®**

2016

- ISO 13485 certification by BSI
- International development
- Launch of the applicator **AMETHYST®**
- Clinical study by Dr NAOURI, *Fat removal using a new cryolipolysis device: a retrospective study of 418 procedures*

2017

- Launch of the **AGATE®**

2018

Launch of the applicator **DIAMOND®** and the **MEDISOL®**

- Clinical study by Professor Thierry PASSERON, PhD *Evaluation of tolerability and efficacy of **CRISTAL®** cryolipolysis treatment on localised fatty deposits in obese subjects*

2019

Launch & certification of the laser **ORIGIN®** as well as the device **CRISTAL Pro®**

2020

New laboratory and opening of the UK subsidiary

2021

Launch of **Body-Layering®**

2022

Launch of **CRISTAL reVive®** and MDR certification

2023

Launch of the **SUBLIM®** & laser hair removal & protocol **Mommy Bloom®**

2024

Launch of **Cellution®** technology



CRISTAL[®]

Body-Layering[®]

A HOLISTIC APPROACH TO THE BODY THROUGH THE COMBINATION OF STATE-OF-THE-ART TECHNOLOGIES

CRISTAL Body-Layering[®] is a non-invasive and personalised global treatment that acts on the 3 layers of the body: the dermis, the hypodermis and the muscle.

CRISTAL Body-Layering[®] acts on the 3 fundamental parameters for a harmonious body: **VOLUME**, **TONE** and **FIRMNESS**.

CRISTAL[®]

Body-Layering[®]

CRISTAL[®]
Pro

STEP 1
Medical Cryolipolysis

Acts on FAT to REFINE
Cristallizes and destroys adipocytes



CRISTAL[®]
Skin

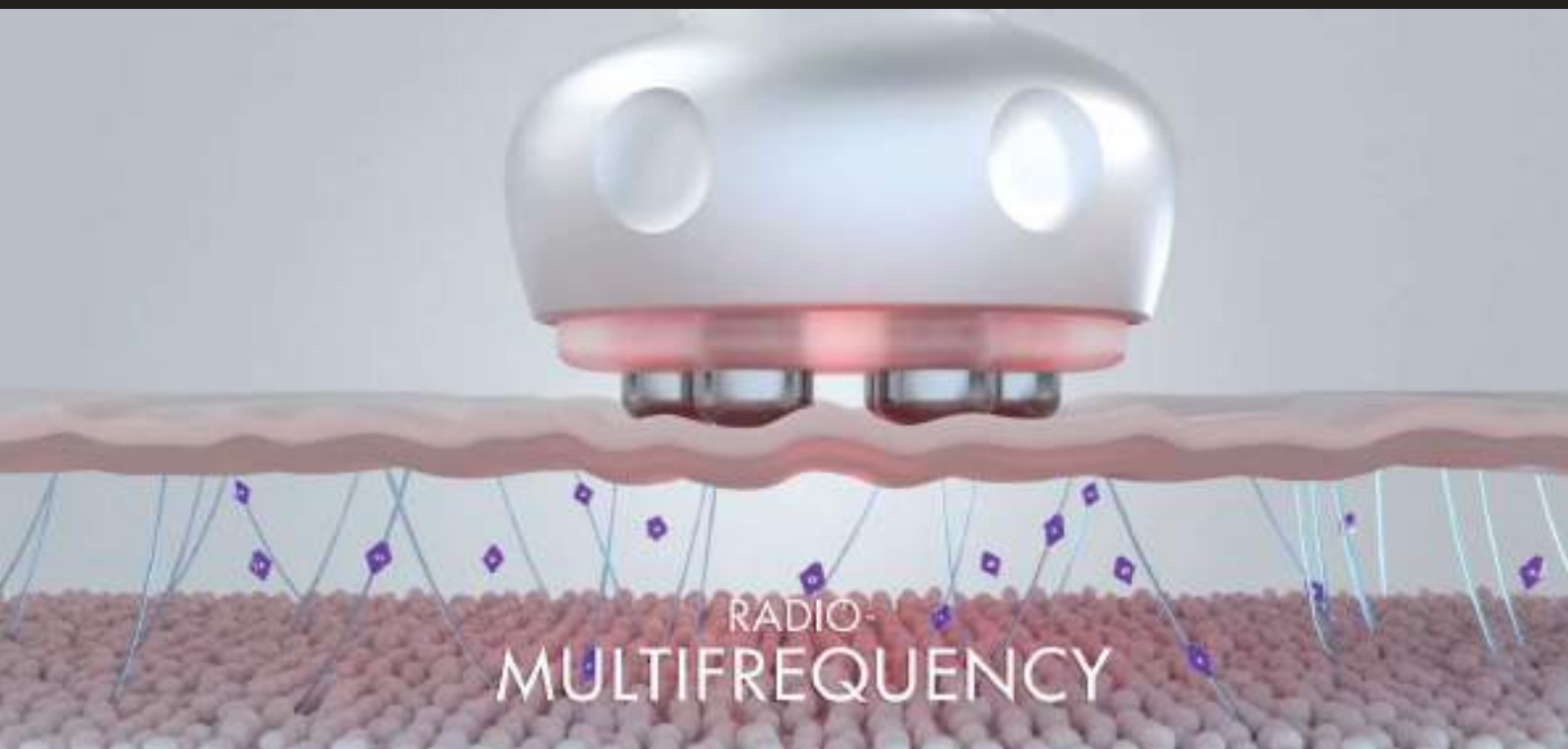
STEP 3
Radio-multifrequency

Acts on the SKIN to FIRM UP
Tighten and reduce sagging skin



STEP 2
Electromagnetic fields

Act on the MUSCLE to SCULPT
Tone and shape the muscles



PRINCIPLE OF CRYOLIPOLYSIS

Intense cooling combined with strong suction pressure, leading to an apoptosis phenomenon: self-destruction and progressive elimination of adipocytes by the lymphatic system.



INDICATIONS

Medical indication

Treatment of localised subareolar fat for male patients with pseudogynecomastia

Aesthetic indications

Reduction of localised fatty deposits in different areas of the body: abdomen, thighs, arms, flanks, chin, knees

BENEFITS

PERFORMANCE

- Treatment of up to **4 zones simultaneously**
- Fast temperature drop to **-12°C**
- **30%* reduction in fatty deposits** (*Clinical study by Dr Naouri)

ACCURACY

- Intuitive and ergonomic interface: pre-recorded protocols and ultra-precise adjustment of parameters for a tailor-made treatment
- Tool to establish a suitable treatment plan based on fatty deposits (optional)

INNOVATION

- **8 sizes of morphological applicators**, for body and face, **"Soft comfort"** (rounded shape to reduce friction and thus reduce side effects)
- Created and patented by Deleo engineers, the **Cavity Cooling Diffusion System™** has pushed the technical limits of cryolipolysis to offer more results to patients.

SECURITY

- **CE medical certified** cryolipolysis technology, CE medical certified cryoprotective wipes, clinical studies.

A COMPLETE RANGE OF APPLICATORS



Indication: Chin.

Indications: Jowls, pseudogynecomastia, knees, ankles.

Indications: Back folds, arms, knees, calves.

Indications: Pseudogynecomastia, back folds, arms, abdomen, knees, love handles.

Indications: Abdomen, pseudogynecomastia.

Indication: Abdomen

Indications: Top, back, inner/outer thighs, abdomen

Indications: Arms, saddlebags, inside/outside thighs, calves.



KP AESTHETICS CLINIC

1 session - abdomen



DOCTOR OUAKIL

1 session - love handles



DOCTOR DUQUENNE - CVH PARIS

1 session - pseudogynecomastia



DOCTOR CHARLOT

1 session - saddlebags & inner thighs



CRISTAL[®]

Pro

THE NEW GENERATION OF CRYOLIPOLYSIS 4 AREAS

*With a full range of applicators
for a perfect morphological adaptation*



CE
2797

«Aesthetic indications are not part of the CE marking of the unit. Only the medical indications have been evaluated under the CE compliance procedure by the notified body BSI NL.»



 MORE INFO

PRINCIPLE OF HI-EMMS

Emission of a focused electromagnetic field, inducing the activation of motor neurons, resulting in forced and intense muscle contractions inducing a phenomenon of muscle fiber hypertrophy.

INDICATIONS

Medical indication

Treatment of urinary incontinence and strengthening of the pelvic floor muscles.

Aesthetic indications

Abdominal reshaping, buttock augmentation and lift

BENEFITS

PRODUCTIVITY

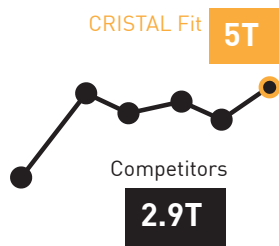
- 2 applicators working simultaneously
- **Integrated cooling system** inside its applicators, allowing the application of high power without unpleasant heat sensation for the patient
- Intelligent interface (pre-recorded protocols)

POWER

- Very strong muscle contraction thanks to a **high intensity (5T)** : the Cristal Fit is the most powerful device on the market
- Longer contractions thanks to its long pulse duration (**400µs**)
- Design of the electromagnetic field allowing in-depth work on the entire muscle group

CRISTAL Fit is

2 TIMES MORE POWERFUL ¹



CRISTAL Fit has a

LONG PULSE DURATION ¹



DOCTOR DELORME

8 sessions - abdomen



DOCTOR AMIOT

6 sessions - abdomen



DOCTOR CHARLOT

8 sessions - abdomen



DOCTOR MISTRAL

8 sessions - buttocks

CRISTAL[®]

Fit

HIGH INTENSITY ELECTROMAGNETIC FIELDS

*to tone deep muscles
and enhance the silhouette*



CE
2797

«Aesthetic indications are not part of the CE marking of the unit. Only the medical indications have been evaluated under the CE compliance procedure by the notified body BSI NL.»



 MORE INFO

PRINCIPLE OF RADIO FREQUENCY

Dual action:

- **Thermal action:** Tightening effect of heat through the emission of high-frequency electromagnetic waves: production of collagen and elastin resulting in skin tensioning.

- **Mechanical action:** Massage handpieces which, with their rounded design, promote lymphatic drainage.

INDICATIONS

Treatment of sagging skin and laxity all over the body (arms, thighs, stomach, face, neck) induced by skin aging

Painful fibrous cellulite

BENEFITS

PROCESSING SPEED

- **3 body & face handpieces** of different sizes and adjustable frequency (**1 MHz / 2 MHz**) for treatment at different depths
- High-performance RF technology: **energy delivered by 3 to 6 electrodes** to precisely target the treated area, permanent variation of the polarity
- Fast heating: **Processing time halved** thanks to a rapid temperature rise to 42°C in less than two minutes

MODULAR INTEGRATION

- The module can be used independently ("stand alone") or **coupled with the CRISTAL Pro device®**



DOCTOR DELORME

8 neck sessions



MOUNIER DOCTOR

3 abdominal sessions

CRISTAL[®]
Skin

MULTIFREQUENCY
RADIO

*to firm the skin and remedy
sagging skin*



CE



 MORE INFO



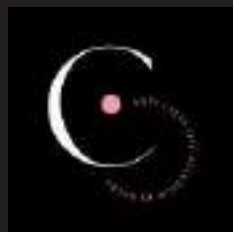
cellution.

BY DELEO

The Ultimate Technology for
Cellulite Treatment.

Cellution® represents the latest technological advancement for combating cellulite.

This innovation ingeniously combines four cutting-edge technologies for cellulite, skin tightening, lymphatic drainage and enhancing the silhouette.



PRINCIPLE OF ACTION

- **Focused diodes (HIFD™ Technology)** : The HIFD™ radiation of 940nm allows for controlled heat that promotes cellular metabolism and enables the stimulation of neocollagenesis and skin tightening.

- **Mechanical massage**: Mechanical action from 0 to 350mb that helps improve blood supply to the adipose tissue, destroy hardened fibrous partitions due to the glycation phenomenon, and eliminate the degradation products of fats.- **Smooth Enhancer™** : Vasodilation increases local blood circulation to allow dermocosmetic actives to penetrate and act in perfect synergy with focused diodes.

- **Vibration waves**: They allow for the restructuring of tissue topography, stimulation of neocollagenesis, improvement of micro-circulation, and enhancement of lymphatic drainage.

BENEFITS

PERFORMANCE

- Fusion of **4 cutting-edge technologies** for a comprehensive and complete approach, even for delicate and sensitive areas.

- Optical sensors for temperature, luminosity, and suction for **secure treatments**.

- **4 morphological adapters** for adaptability on all treatment areas.

- **Rapid heating** : Treatment time is halved, thanks to a quick temperature rise to 42°C in less than five minutes.

- Adjustable suction and temperature for a **personalized treatment and painless** for the patient.

ERGONOMIC APPLICATORS

- Lightweight and morphological applicators to optimize the operator's comfort during care provision.

INDICATIONS

Treatment of cellulite (edematous, adipose, fibrous), skin laxity, lymphatic drainage, and enhancing the silhouette.



DOCTOR BENATAR

10 sessions



DOCTOR CHARLOT

10 sessions

cellution.

BY DELEO

THE FUSION OF
4 CUTTING-EDGE TECHNOLOGIES

*to effectively target cellulite and improve
the texture and firmness of the skin.*



cellution.
BY DELEO



SCAN ME

PRINCIPLE OF HI-EMMS

Coupled with CRISTAL Fit® (CE2797), Cristal reVive® uses High Intensity Electromagnetic Muscle Stimulation (HI-EMMS) to retrain the pelvic floor muscles in a non-invasive way.

During a treatment session, motor neurons polarise and depolarise, resulting in supramaximal muscle contraction. It induces microlesions in the muscle triggering muscle growth.

CRISTAL reVive treatment® revolutionises the management of female well-being by preventing and restoring the lack of tone of the pelvic floor.

INDICATIONS

Medical indication

Treatment of urinary incontinence and strengthening of the pelvic floor muscles.

BENEFITS

PAINLESS TREATMENT

CRISTAL reVive® treatment by Deleo is completely painless. Unlike electrical stimulation, the intense electromagnetic field generated by the device does not activate nociceptors (pain receptors). It thus offers a **pleasant quality of care, without pain or muscle fatigue.**

For more efficiency, it is possible to adjust the intensity of the treatment according to the patient's tolerance.

INCREASED EFFICIENCY

The forced and intense contractions generated by electromagnetic fields are involuntary and gradually increase in strength and **muscular endurance of the perineum.**

The CRISTAL reVive® treatment by Deleo uses a specific range of frequencies that does not allow muscle relaxation between two stimulations.

One session allows thousands of **intense and deep contractions** of the perineal muscles, **essential in the rehabilitation of urinary incontinence.**

COMFORT
Comfortable position during the whole session

PRECISION
Precise action zone and perfectly targeted

PERFORMANCE
Cristal Fit® applicator
• 5 Tesla
• Pulse duration 400 µs

PREMIUM INTERFACE
• Simple and intuitive interface
• Advanced features
• Pre-registered protocols



HYGIENE
• Leather coating anti-bacterial, anti-fungal, fireproof, waterproof
• Quick cleaning without removing the covers

ELEGANCE
Aluminium body, clean and simple design, suitable for any treatment room

MOBILITY AND SAFETY
• 4 independent wheels 360°
• 2 brakes
• Medical compatibility

CRISTAL[®]
reVive

DEDICATED
TO THE PELVIC FLOOR



 MORE INFO



The logo features the word "LIGHT" in a large, white, sans-serif font, with "Therapy" in a smaller, white, sans-serif font below it. The text is centered between two decorative elements: two sets of concentric, semi-circular arcs of small, glowing yellow dots that create a sense of light or energy emanating from behind the text.

LIGHT

Therapy

LIGHT TREATMENT,
WITH THE MOST EFFICIENT LASERS ON THE MARKET

Our Light Therapy series offers a new generation of treatments, designed to benefit the skin using the latest technology, based on the principle of photobiomodulation.

Light treatment represents considerable advance for many skin problems: natural, non-invasive and painless for the patient.



 origin FRACTIONAL
ERBIUM GLASS LASER

To perfect your technical platform
thanks to its versatility of treatments.



 sublim PERMANENT
HAIR REMOVAL LASER

For uncompromising results,
and painless treatments.



DYNAMIC PHOTOTHERAPY LED LAMP

Ideal for combined treatments in aesthetic medicine
and post-operative and restorative care.



PRINCIPLE OF FRACTIONAL LASER

Creation of coagulation micro-wells based on the use of the principle of photothermolysis, which consists in heating the fibroblasts very quickly, while limiting the heating of the dermis, generating a phenomenon of biostimulation.

INDICATIONS

Medical indication

Treatment of inflammatory acne, reduction of scars, treatment of melasma.

Aesthetic indications

Blepharoplasty, wrinkles and fine lines of the neck, face and neckline, rejuvenation, stretch marks.

BENEFITS

PERFORMANCE

-17 W **laser** and high shooting speed (**200 shots in 1 minute**)

TECHNOLOGICAL INNOVATION

- **Ultra-thin laser beam (70 µm)** for deeper, more effective treatments **without social downtime.**
- **Wavelength 1550 nm** specific to fibroblast activation but limiting thermal diffusion.
- **Air cooling system** which allows a comfortable and pleasant treatment for the patient.



ERGONOMICS

- The ORIGIN® by Deleo laser software is equipped with **protocols that evolve** according to your daily practice and are generated automatically according to the patient's phototypes, age, sex and indication.
- **Ergonomic handpiece**, easy to handle.



DOCTOR DELORME
3 sessions - blepharoplasty



DOCTOR KHEMIS
4 sessions - pigment spots



DOCTOR FAYARD
1 session - acne scars



DOCTOR SARFATI
3 sessions - scar





LATEST GENERATION FRACTIONAL ERBIUM GLASS LASER


*to perfect your technical platform
thanks to its versatility of treatments*



CE
2797

«Aesthetic indications are not part of the CE marking of the unit. Only the medical indications have been evaluated under the CE compliance procedure by the notified body BSI NL.»



 MORE INFO

PRINCIPLE OF PDT

Dynamic phototherapy, or photobiomodulation by LEDs, stimulating cell renewal (neo-collagenesis) allowing collagen remodelling.

INDICATIONS

Medical indication

Mild to moderate inflammatory acne, eczema, psoriasis, rosacea, precancerous and cancerous lesions defined as actinic keratosis, Bowen's disease (epidermal carcinoma), superficial basal cell carcinoma, vitiligo, scarring.

Aesthetic indications

Skin rejuvenation and aging, warts, alopecia, stretch marks, scars, post-aggressive procedures.

BENEFITS

PERFORMANCE

- Wide range of indications treated thanks to the 4 wavelengths: **blue (415 nm), yellow (590 nm), red (630 nm) and infrared (850 nm)**
- Wide power range for more results: of **2 to 74 mW/cm²**
- **Pre-recorded protocols** for fast & specific treatments

ERGONOMICS

- **Multi-direction rotary system** for perfect positioning
- **Extra large LED panels** for face and body
- Articulated arm allowing wider coverage of the treated area

4 WAVELENGTHS



DOCTOR NARJOUX
6 sessions - wrinkles and fine lines



DOCTOR BAVEREL
4 sessions - stretch marks



DOCTOR CREUSOT
1 session - burn



DOCTOR BAVEREL
10 sessions - inflammatory acne



DYNAMIC PHOTOTHERAPY LED LAMP

*ideal for combined treatments in aesthetic medicine
and post-operative and restorative care*



Aesthetic indications are not part of the CE marking of the unit. Only the medical indications have been evaluated under the CE compliance procedure by the notified body BSI NL.

PRINCIPLE OF HAIR REMOVAL LASER

The SUBLIM emits at a specific wavelength of 808 nm which is absorbed by the melanin of the hair follicle.

The melanin converts the energy into heat, then diffuses it, which damages the hair follicle in the growth phase.

INDICATIONS

Medical indication

Treatment of hirsutism.

Aesthetic indications

Permanent hair removal.

BENEFITS

PERFORMANCE

- Wavelength of **780 nm**
- Suitable for **phototypes I to IV**
- Frequency of **1 to 8 shots per second**
- **Automatic fire**
- **Power 1 J-100 J (16 mm spot), XJ-XJ (10 mm spot)**
- Pulse time: **1 to 100 ms**

TECHNOLOGICAL INNOVATION

- **Air cooling system** allows a painless and pleasant treatment for the patient
- Up to **10 million shots** providing **long-lasting and cost-effective use**
- Spot sizes: **16 and 10 mm**



ERGONOMICS

- Since the laser unit is located in the machine, the SUBLIM handpiece® by Deleo is **ultra light and ergonomic**.

- Ergonomic interface, which allows you to **choose your protocols according to the phototype, color and thickness of the hair**.





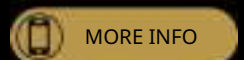
FIRST FRENCH LASER FOR PERMANENT HAIR REMOVAL

*for uncompromising results
and painless treatments*



CE
2797

«Aesthetic indications are not part of the CE marking of the unit. Only the medical indications have been evaluated under the CE compliance procedure by the notified body BSI NL.»



CONTACT



AFTER-SALES SERVICE

+337 66 08 20 30
support@deleo.fr

MARKETING SERVICE

+33 4 94 49 49 45
marketing@deleo.fr

AFTER SALES SERVICE

+33 4 94 45 83 75 - Tap 4
export@deleo.fr

Deleo is at your disposal for any request, from Training to After-Sales Service, including Marketing support.

- Training provided by our teams and an e-learning platform at your disposal
- A qualified and responsive after-sales service, at your disposal from Monday to Friday from 8:30 a.m. to 6 p.m.
- On-demand premium marketing tools and a marketing team on hand to meet your needs, to help you communicate effectively about your devices.

We are delighted to welcome you to our premises in Fréjus.
To follow our news, visit our official Facebook, Instagram and LinkedIn pages.



@deleo.official
www.deleo.fr

A WORLDWIDE DISTRIBUTION

CURRENTLY AVAILABLE IN **34 COUNTRIES**



1 MILLION + **BODIES SHAPED**

10 PATENTS

13 YEARS OF EXPERIENCE

LET'S SHAPE THE FUTURE
TOGETHER!



Deleo S.A.S. 239 via Nova
Pôle d'Excellence Jean Louis
83600 Fréjus
T. +33 4 94 45 83 75 | contact@deleo.fr
www.deleo-medical



CATALOG DELEO-EN-v3-120324